

Appendix D

Public Transportation Connectivity Analysis

EXISTING GROUND TRANSPORTATION OPTIONS

Palm Springs Public Transit

City public transit routes that pass near Palm Springs International Airport include SunLine Transit Agency Bus Routes 2 and 4, SunRide On-Demand Rideshare Service Routes 2 and 4, and Basin Transit Agency Routes 12 and 15. (See Figure D-1: City Public Transit Connections to PSP.)

Regional Connections to Palm Springs International Airport

Regional transportation options include Greyhound, FlixBus, and Amtrak, all with stops in a relatively sparse area north of the city (See Figure D-2: Regional Ground Transportation.) Of these three providers, the city public transit system only connects to the Greyhound stop via SunLine Transit Route. The Palm Springs International Airport has an Amtrak thruway bus connection to the Fullerton, CA Amtrak train station.

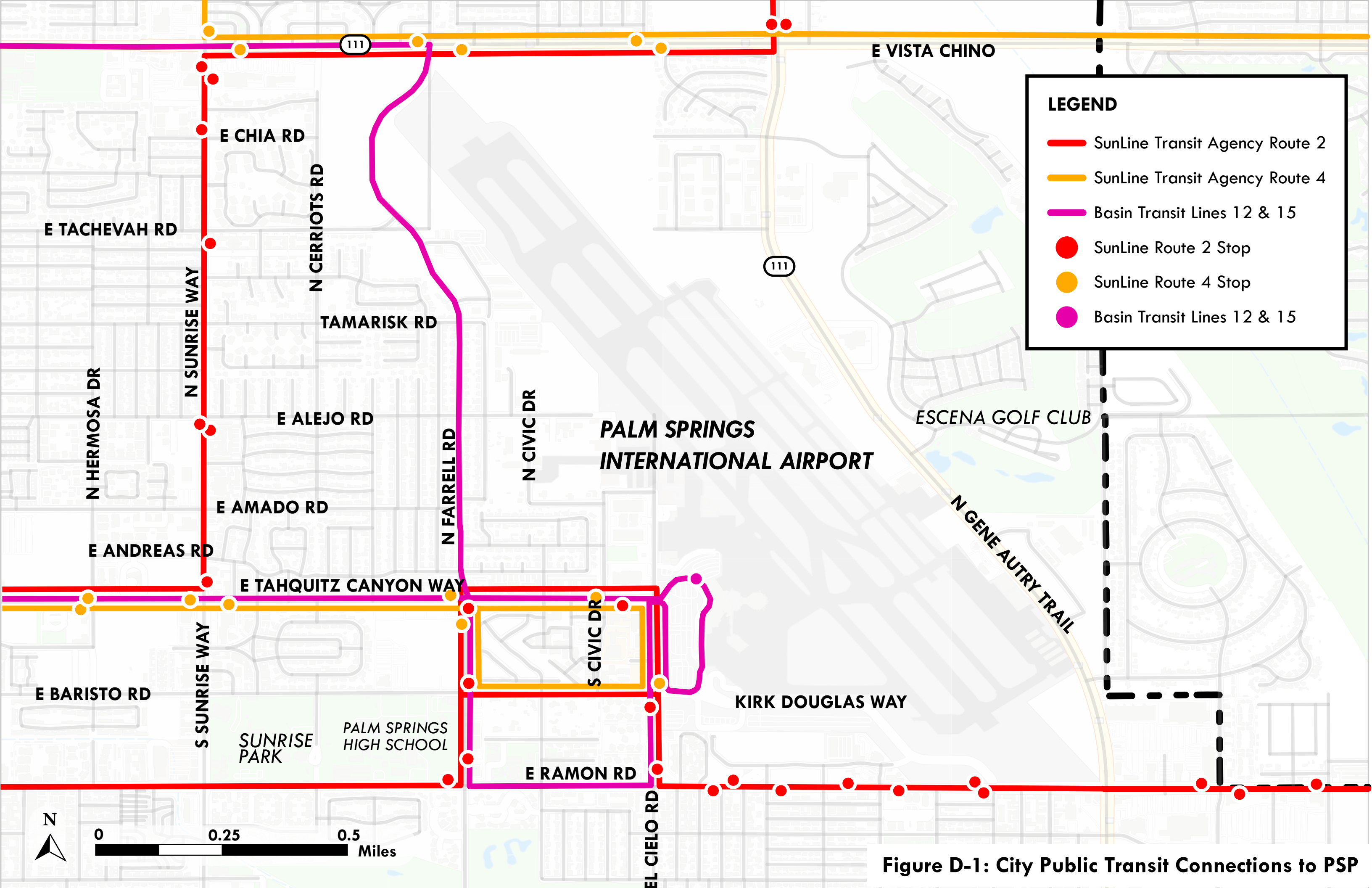
PROPOSED CONNECTIONS

Below are several proposals to increase regional ground transportation connections to the Palm Springs International Airport. They include consideration of proposed future transportation projects (see Table D-1: Future Regional Ground Transportation Projects.)

Regional Bus Connections

Transit from PSP to FlixBus: There is currently no city public transit service from PSP to the Flixbus stop at 6600 N Indian Canyon Dr. To meet demands of future air and rail travelers and connect PSP to Los Angeles, Las Vegas, Phoenix, and other regional destinations available with Flixbus, it would be beneficial to add service on the existing SunLine Transit Agency Route 2 from PSP Airport to the Flixbus stop (see Figure D-3: Proposed PSP Transit Connections.)

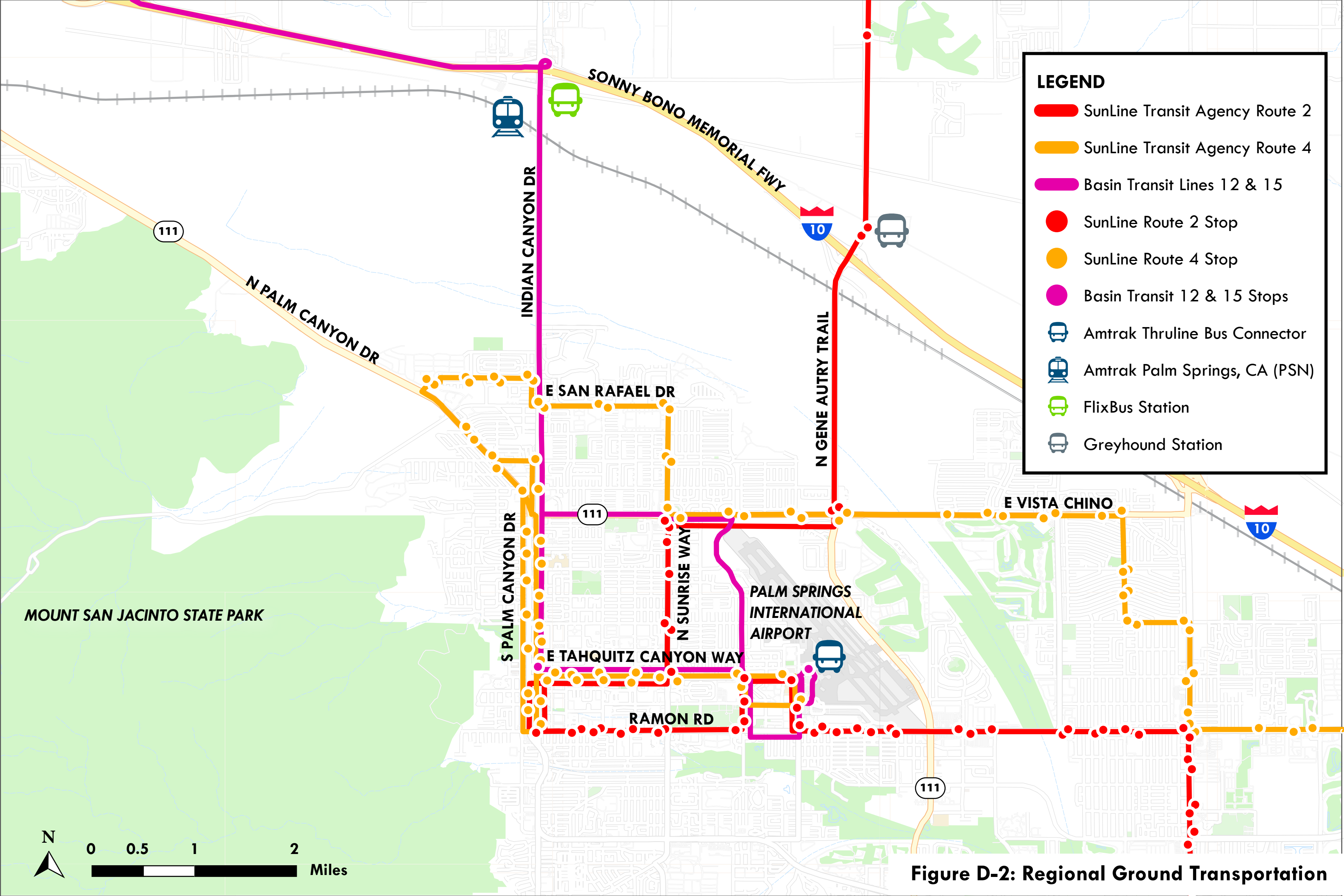
Transit from PSP to Greyhound: SunLine Transit Agency Route 2 provides daily service every half hour from PSP to the Greyhound station from 5:15am to 10:45pm, but the bus route takes around 40 minutes as compared to a 12-minute drive. The SunLine Transit Agency could provide a more direct line for Route 2 up Hwy 11 from PSP to meet tourists' needs who want to connect to Brightline West. This could be in the form of an Express bus to serve Greyhound, FlixBus, and Amtrak passengers from PSP.



LEGEND

- SunLine Transit Agency Route 2
- SunLine Transit Agency Route 4
- Basin Transit Lines 12 & 15
- SunLine Route 2 Stop
- SunLine Route 4 Stop
- Basin Transit Lines 12 & 15

Figure D-1: City Public Transit Connections to PSP



LEGEND

- SunLine Transit Agency Route 2
- SunLine Transit Agency Route 4
- Basin Transit Lines 12 & 15
- SunLine Route 2 Stop
- SunLine Route 4 Stop
- Basin Transit 12 & 15 Stops
- Amtrak Thruline Bus Connector
- Amtrak Palm Springs, CA (PSN)
- FlixBus Station
- Greyhound Station

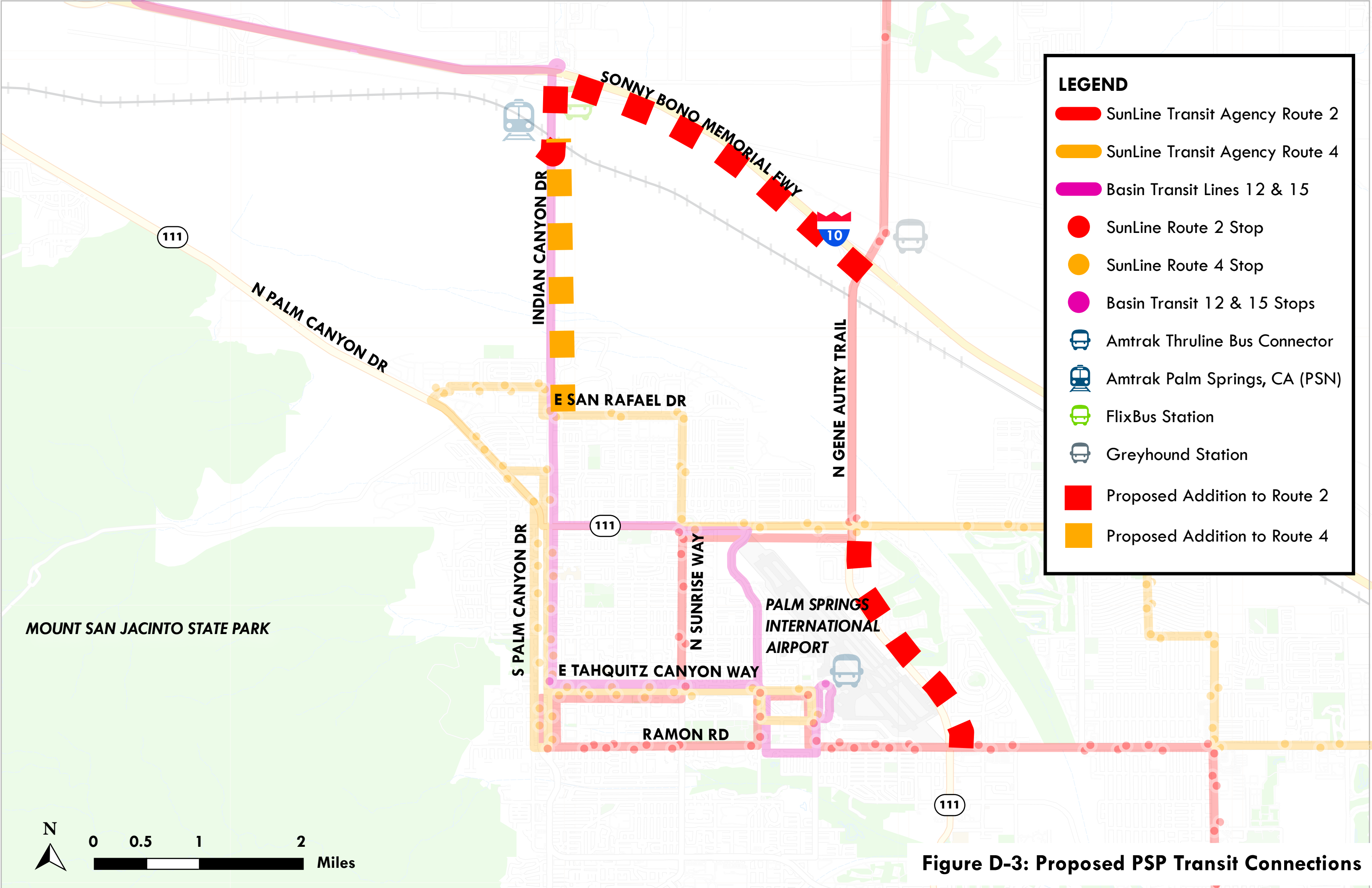
Figure D-2: Regional Ground Transportation

Table D-1: Future Regional Ground Transportation Projects

Project	Termini		Description	Status
	West	East		
SunLine Transit Agency Improvements Route 2	Desert Hot Springs	Cathedral City	Increase weekday frequency from every 20 minutes to every 15 minutes.	Project not funded; implementation date TBD
SunLine Transit Agency Improvements Route 4	Westfield Palm Desert	Palm Springs	Increase weekday peak frequency from 40 minutes to every 30 minutes.	Project not funded; implementation date TBD
SunLine Transit Agency Coachella Mobility Hub	4 th & Cesar Chavez	Vine Ave Transfer Terminal	New mobility hub with residential development, bus laybys, passenger amenities, pedestrian & bicycle paths	Construction began winter 2024, set to open fall 2024
Brightline West*	Los Angeles	Las Vegas	218-mile high-speed passenger rail service	Field work began Jan. 2024 to advance final stages of design; preparation for groundbreaking
Coachella Valley – San Geronio Pass Rail Corridor Service Project	Los Angeles	Coachella	144-mile daily intercity passenger rail service	EIS certified July 2022; construction slated for within the next 10 years

Source: 1-3: SunLine Transit Agency Short-Range Transit Plan, FY 2024-2028; 4: Brightline West Project Description; 5. Riverside County Transportation Commission; 6. Coachella Valley Association of Governments (CVAG)

*Closest station to Palm Springs is Rancho Cucamonga, which is 6.2 miles from the Ontario Greyhound bus stop (17-minute drive, 42 minutes on OmniTrans 66 bus)



Regional Rail Connections

Palm Springs Amtrak Station Improvements: If the proposed Coachella Valley – San Geronio Pass Rail Corridor Service Project route from Coachella to Los Angeles (see Figure D-4) will stop at the Palm Springs Amtrak Station, the current facility would need significant improvements and new transit connections through the SunLine Transit Agency. The existing station is a simple platform and shelter with no restrooms, staff, Wi-Fi, ATM, or vending (see Figure D-5.) There is parking and ADA accessibility to the platform but no wheelchair available. To serve the influx of passengers from the new rail line, this station would require robust facility and amenity improvements to be more amenable to tourists.

Transit Connections: There is currently no public transit route to the Amtrak station. To provide access from PSP, SunLine Routes 2 or 4 could expand their routes to service the station in anticipation of future connections to the CV-San Geronio Rail Corridor Project. (See Figure D-3: Proposed PSP Transit Connections.)

Regional Connections: The proposed high-speed Brightline West train from Las Vegas to Los Angeles will have a station in Rancho Cucamonga, the closest city to Palm Springs on the route (see Figure D-6.) There are currently two ground transportation options from Palm Springs to Rancho Cucamonga: Greyhound and Amtrak service to Ontario. To connect the PSP to the Brightline West rail project, Greyhound or Amtrak would need to increase service to Palm Springs. In addition, public transit from PSP to the Greyhound bus stop and Palm Springs Amtrak Station would need to be improved.

Greyhound/Amtrak: Greyhound and Amtrak service currently runs once a day from Palm Springs to Ontario. Both providers pass through Palm Springs once a day, with Greyhound at 10:15am and Amtrak – less ideally – at 2am (see Figure D-6.) To bring in tourists on Brightline West from Los Angeles and Las Vegas, Greyhound and/or Amtrak should increase frequency from Ontario to Palm Springs.

Proposed Coachella Valley – San Gorgonio Rail Service

LEGEND

- - Preferred Route
- - Existing Station
- Potential Station Area

The map shows the proposed rail route starting at **Los Angeles Union Station** (Existing Station) in Los Angeles County. The route travels east through **Fullerton** (Existing Station) and **Riverside** (Existing Station). It then passes through the **Pass Area** and **Palm Springs** (Existing Station) in San Gorgonio Pass. The route continues through the **Coachella Valley**, passing through **Indio** and **Coachella Thermal** (Potential Station Area). The map also shows major highways (Interstates 5, 10, 15, 215, 78, 74, 76, 80, 89, 94, 95, 98, 101, 103, 105, 107, 108, 111, 113, 115, 117, 119, 121, 123, 125, 127, 129, 131, 133, 135, 137, 139, 141, 143, 145, 147, 149, 151, 153, 155, 157, 159, 161, 163, 165, 167, 169, 171, 173, 175, 177, 179, 181, 183, 185, 187, 189, 191, 193, 195, 197, 199, 201, 203, 205, 207, 209, 211, 213, 215, 217, 219, 221, 223, 225, 227, 229, 231, 233, 235, 237, 239, 241, 243, 245, 247, 249, 251, 253, 255, 257, 259, 261, 263, 265, 267, 269, 271, 273, 275, 277, 279, 281, 283, 285, 287, 289, 291, 293, 295, 297, 299, 301, 303, 305, 307, 309, 311, 313, 315, 317, 319, 321, 323, 325, 327, 329, 331, 333, 335, 337, 339, 341, 343, 345, 347, 349, 351, 353, 355, 357, 359, 361, 363, 365, 367, 369, 371, 373, 375, 377, 379, 381, 383, 385, 387, 389, 391, 393, 395, 397, 399, 401, 403, 405, 407, 409, 411, 413, 415, 417, 419, 421, 423, 425, 427, 429, 431, 433, 435, 437, 439, 441, 443, 445, 447, 449, 451, 453, 455, 457, 459, 461, 463, 465, 467, 469, 471, 473, 475, 477, 479, 481, 483, 485, 487, 489, 491, 493, 495, 497, 499, 501, 503, 505, 507, 509, 511, 513, 515, 517, 519, 521, 523, 525, 527, 529, 531, 533, 535, 537, 539, 541, 543, 545, 547, 549, 551, 553, 555, 557, 559, 561, 563, 565, 567, 569, 571, 573, 575, 577, 579, 581, 583, 585, 587, 589, 591, 593, 595, 597, 599, 601, 603, 605, 607, 609, 611, 613, 615, 617, 619, 621, 623, 625, 627, 629, 631, 633, 635, 637, 639, 641, 643, 645, 647, 649, 651, 653, 655, 657, 659, 661, 663, 665, 667, 669, 671, 673, 675, 677, 679, 681, 683, 685, 687, 689, 691, 693, 695, 697, 699, 701, 703, 705, 707, 709, 711, 713, 715, 717, 719, 721, 723, 725, 727, 729, 731, 733, 735, 737, 739, 741, 743, 745, 747, 749, 751, 753, 755, 757, 759, 761, 763, 765, 767, 769, 771, 773, 775, 777, 779, 781, 783, 785, 787, 789, 791, 793, 795, 797, 799, 801, 803, 805, 807, 809, 811, 813, 815, 817, 819, 821, 823, 825, 827, 829, 831, 833, 835, 837, 839, 841, 843, 845, 847, 849, 851, 853, 855, 857, 859, 861, 863, 865, 867, 869, 871, 873, 875, 877, 879, 881, 883, 885, 887, 889, 891, 893, 895, 897, 899, 901, 903, 905, 907, 909, 911, 913, 915, 917, 919, 921, 923, 925, 927, 929, 931, 933, 935, 937, 939, 941, 943, 945, 947, 949, 951, 953, 955, 957, 959, 961, 963, 965, 967, 969, 971, 973, 975, 977, 979, 981, 983, 985, 987, 989, 991, 993, 995, 997, 999) and major airports (LAX, SNA, ONT, PSP). The map also shows the **San Gorgonio Pass** and the **Coachella Valley**. A north arrow is located in the bottom right corner.

RIVERSIDE COUNTY

Source:

**Will stop at the Palm Springs Amtrak Station
at North Indian Canyon Drive & Palm Springs Station Road**

Figure D-6: Proposed Brightline West



Two transit routes from PSP to the Rancho Cucamonga Station:

Source: Brightline West

1. Greyhound from 22600 Palm Dr to Ontario, CA
(Only once a day, at 10:15am)

2. Amtrak from Palm Springs to Ontario, CA
(Only once a day, at 2am)